



Microflex® Advance™ Array Microphones

In this guide you'll learn how to use the Shure Designer System Configuration Software to configure your devices' network settings, create projects and rooms, and finally route audio to all your Shure devices.

Step 1: Setting Shure Designer System Configuration Software Network Settings

To connect to any Shure device with the Shure Designer System Configuration Software, select the correct NIC (Network Interface Card) for the software.

- Open the Designer software and select Settings from the options on the left side of the screen.
- Then, under "Network setup," select the correct NIC for your system (see fig. 1).

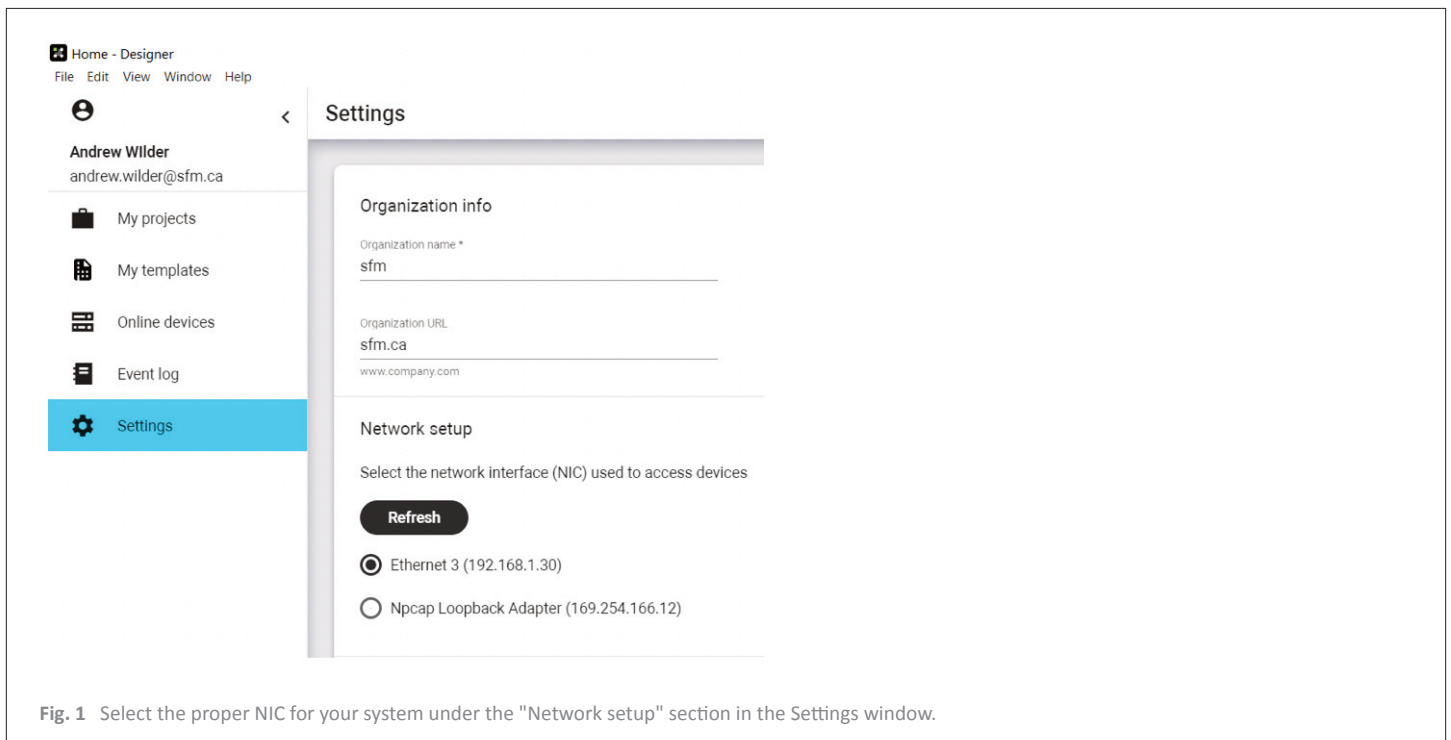


Fig. 1 Select the proper NIC for your system under the "Network setup" section in the Settings window.

Step 2: Editing Device Network Settings

On the left side of the screen, click on the **Online Devices** tab to see all Shure devices currently available on a given network (see fig. 2). You will see a list of connected devices and the current control IP address of each device.

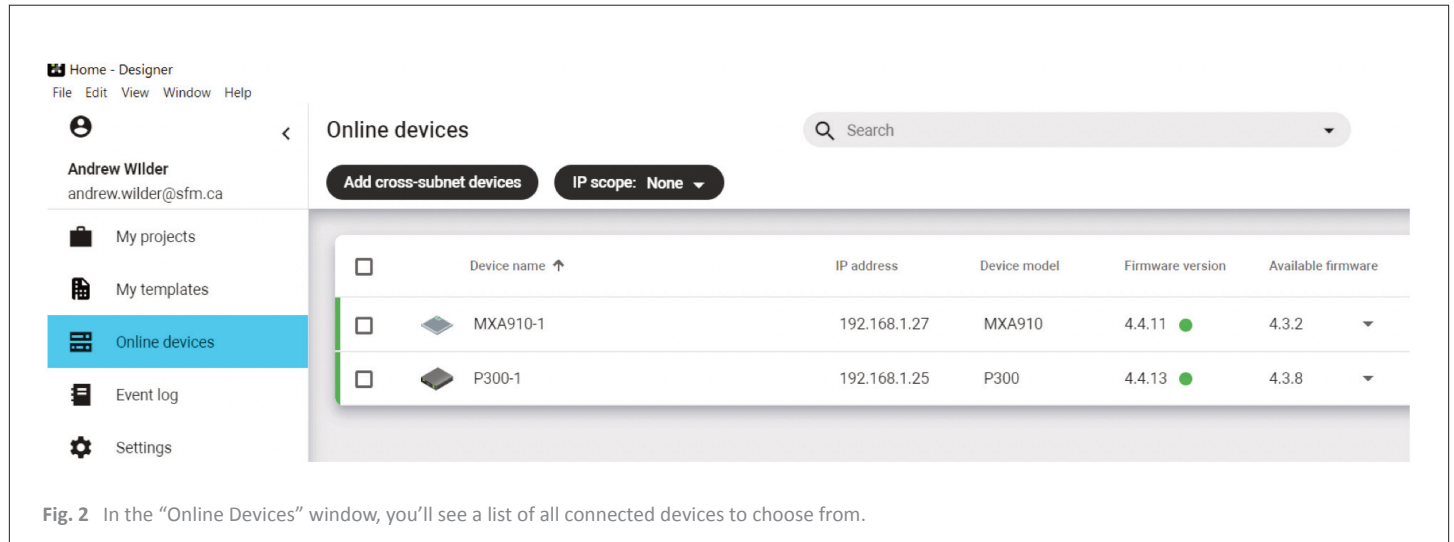


Fig. 2 In the “Online Devices” window, you’ll see a list of all connected devices to choose from.

To edit a device’s network settings, start by double-clicking on the device.

A new window will appear for your selected device. Click the gear icon in the upper right corner (see fig. 3).

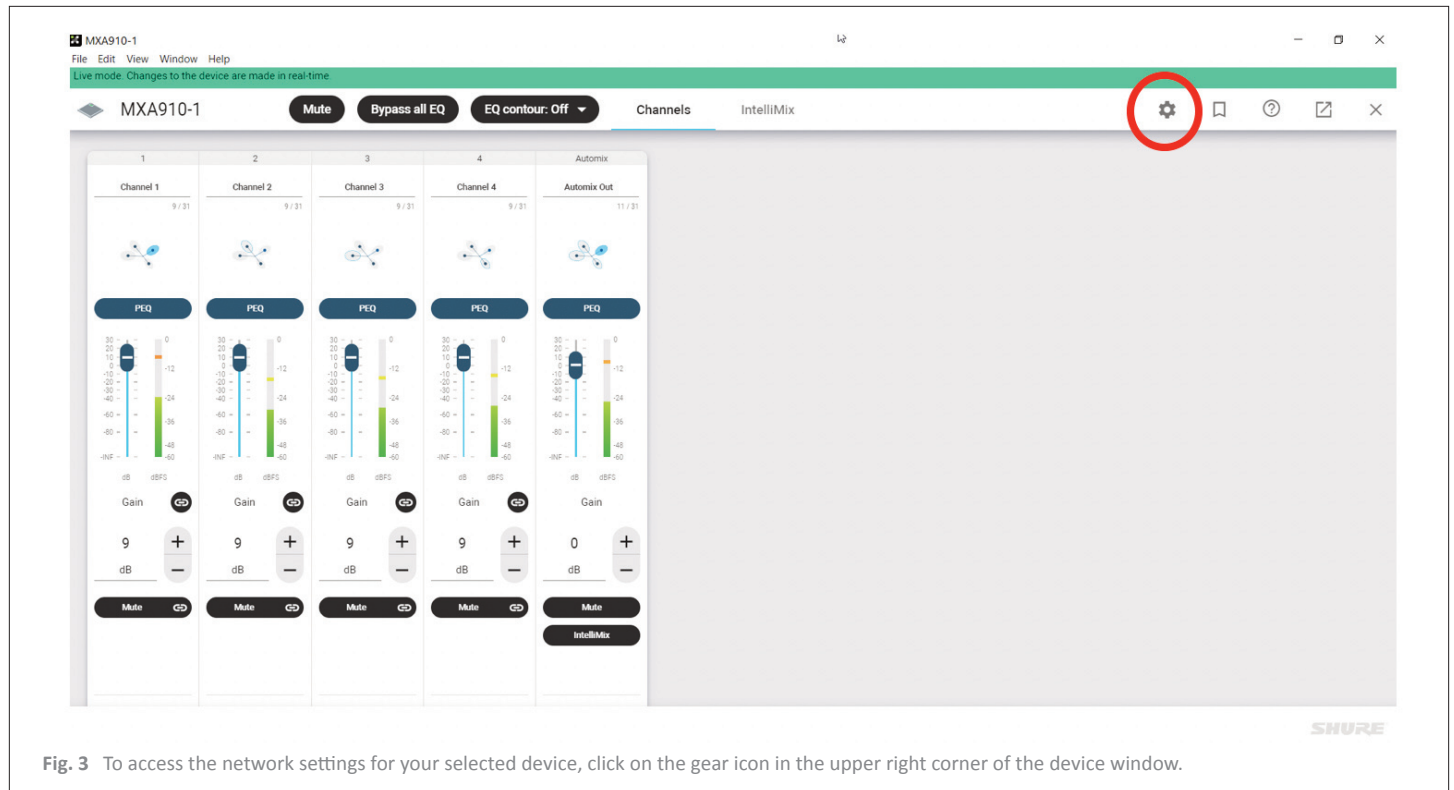
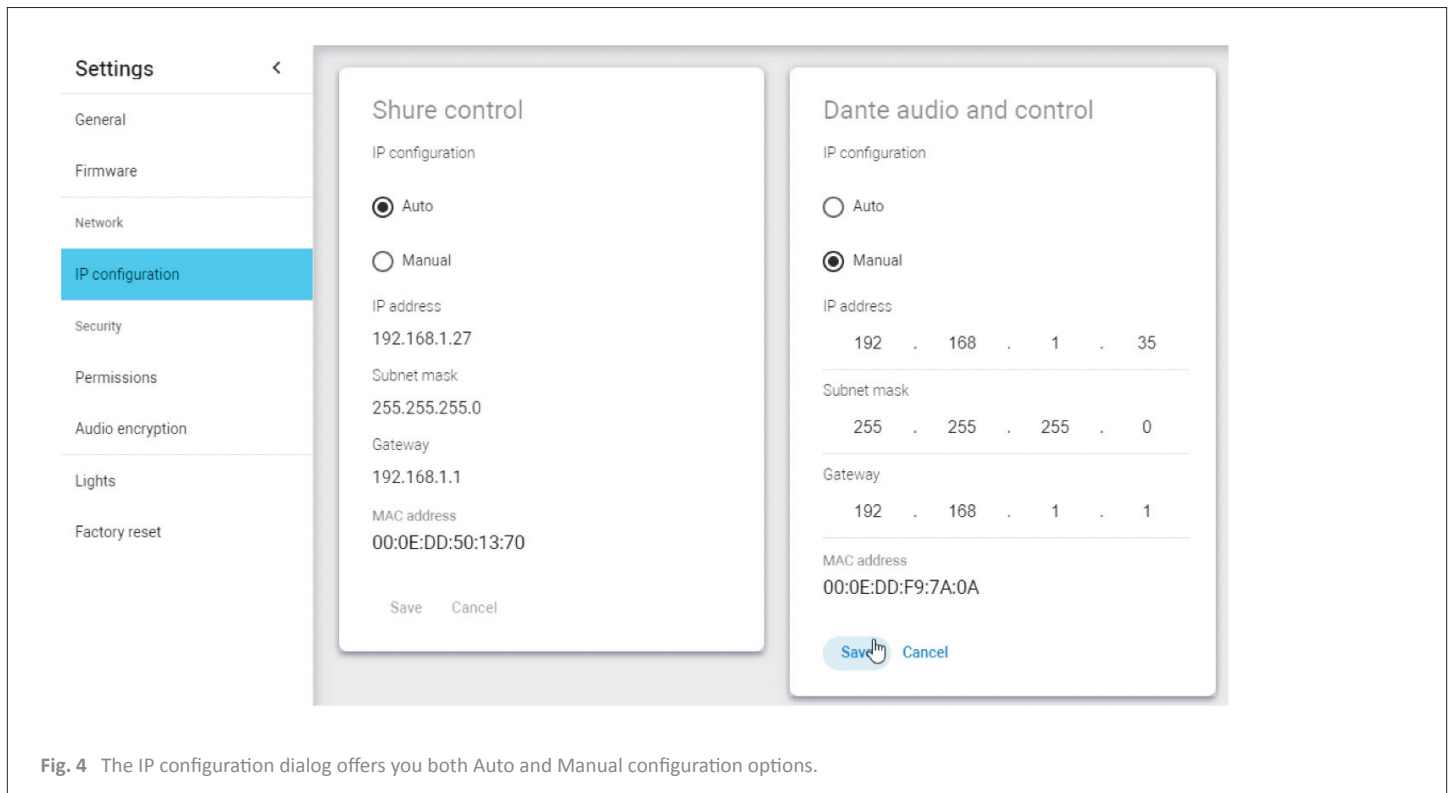


Fig. 3 To access the network settings for your selected device, click on the gear icon in the upper right corner of the device window.

Next, click on **IP Configuration** on the left side of the screen. There are two IP configuration methods to choose from (see fig. 4).



When using Manual configurations, the audio and control IP addresses **MUST NOT** be identical, or it will cause an IP conflict. Be sure to use two different addresses. It is, however, recommended that the Shure control and audio IP addresses both live in the same subnet.

DHCP vs. Static:

- For DHCP, select Auto for both configurations
- For Static:
 - Select Manual for Dante audio and control IP configuration;
 - Enter the required information: IP address, Subnet Mask, and Gateway;
 - Click Save.

Select Manual for the Shure control IP, input the correct information, and click Save.

Tip: Setting the IP address for audio first allows you to set both addresses before you lose communication if addresses will be in a different subnet than your PC.

Step 3: Creating Your Project

In the main Designer window, select **My Projects** from the list on the left side (see fig. 5) and then click **New Project**.

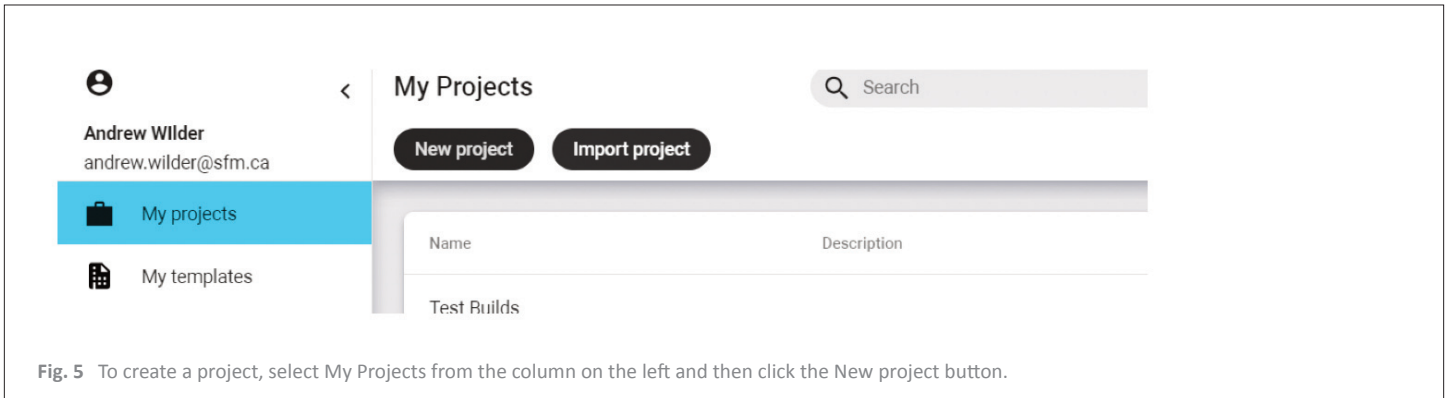


Fig. 5 To create a project, select My Projects from the column on the left and then click the New project button.

Once in the **Create project** dialog (see fig. 6) name your project and provide a brief description (optional). A project is the company, or site you are working on.

Click **Create**.

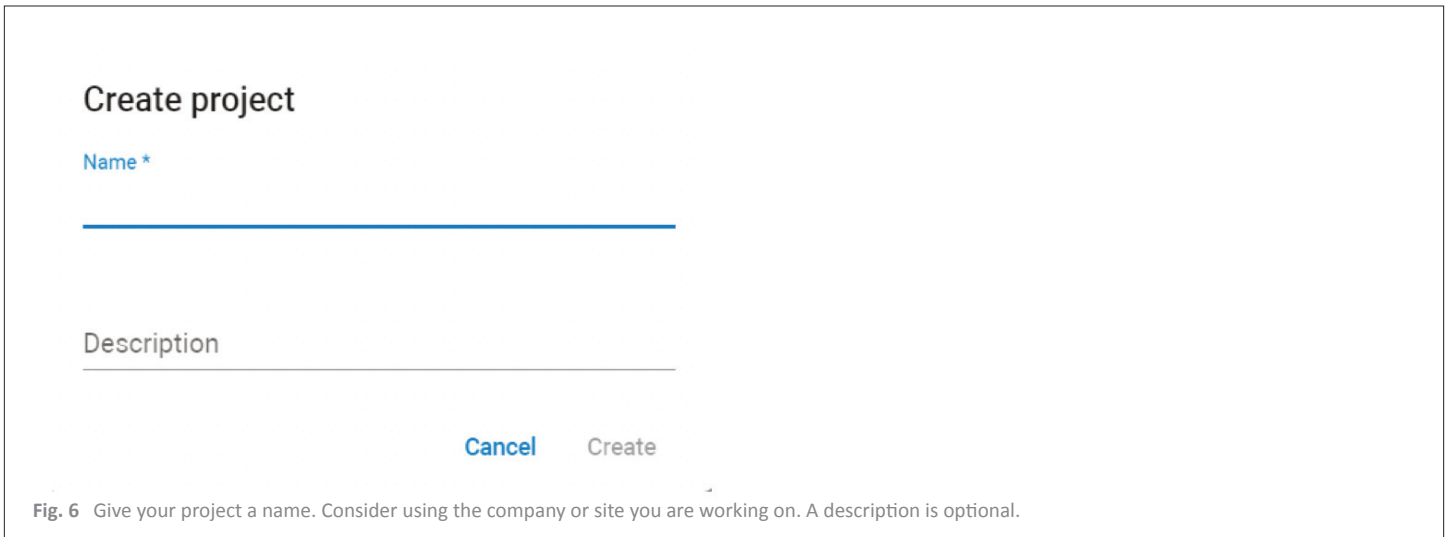


Fig. 6 Give your project a name. Consider using the company or site you are working on. A description is optional.

The project you just created should now show in your project list. Double-click on the project.

Click on the **New Location** button at the top (fig. 7) to open the enter the room name in the resulting dialog (Fig. 8).
Click **Create**.

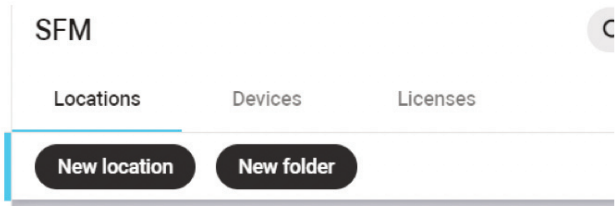


Fig. 7 Clicking New location at the top will open the Create location dialog.

Create location

Name *

Boardroom 1

Description

First floor boardroom

Project

SFM

Cancel Create

Fig. 8 You can enter your location (room or other) name in the Name field. A description is optional, yet helpful.

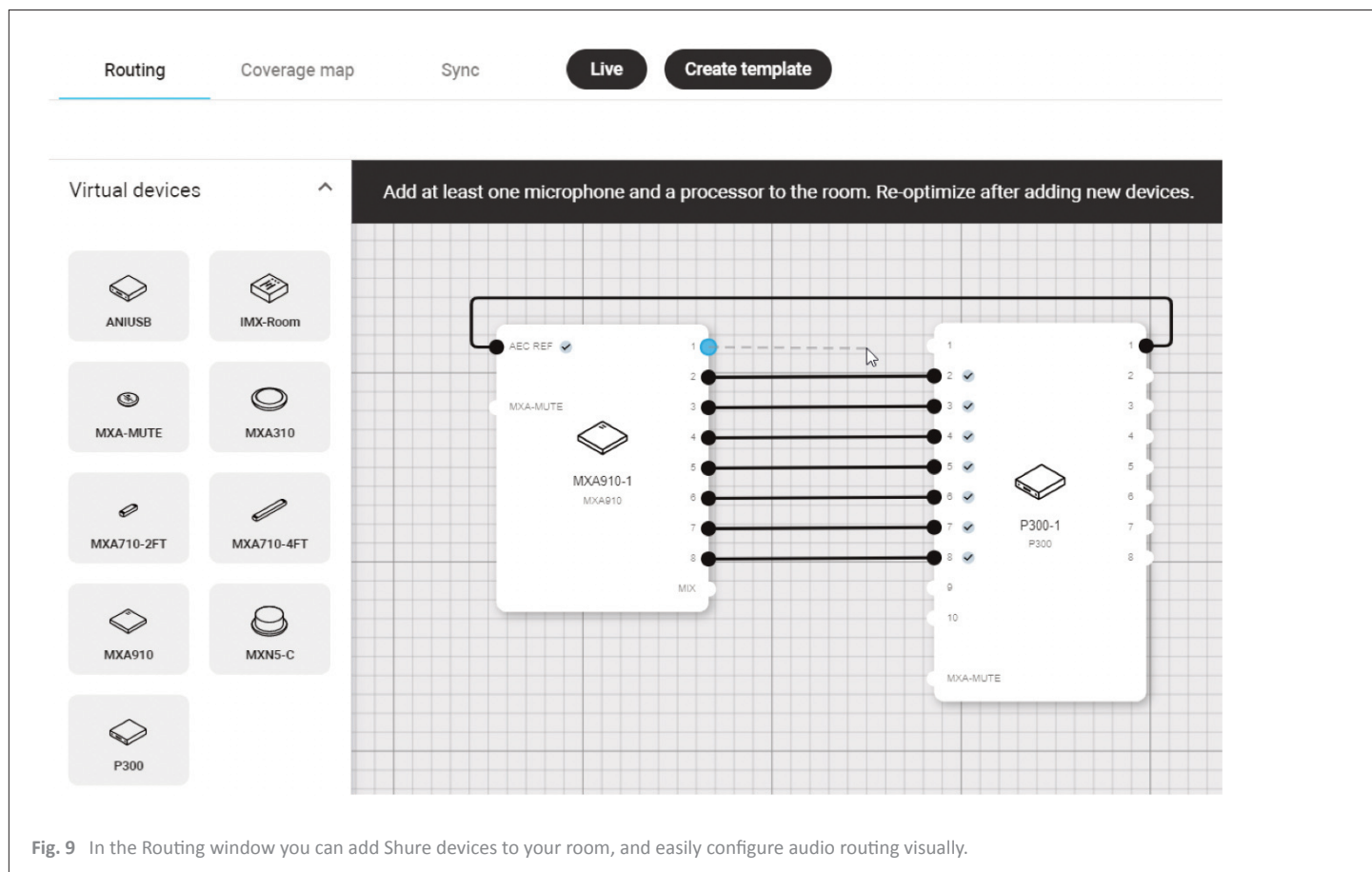
Step 4: Adding Devices & Routing Audio

Once you have created your room, the Routing window will open. Here you can route audio to and from devices.

Click on the **Live** button at the top. This will take you offline and allow you to add Shure devices to your room.

From the left column, drag the Shure devices you want to add to the center window (see fig 9).

Once all devices are added, click the **Optimize** button to automatically route audio.



To manually route audio, click on a device's numbered audio pin and draw a line to the desired I/O pin on another device.

To delete a connection, click the line and select **Delete**.

If you have any questions about the information in this document, contact support@sfm.ca or visit our Technical Support Portal.
For additional online training certification courses, be sure to visit the Shure Audio Institute and get started today!